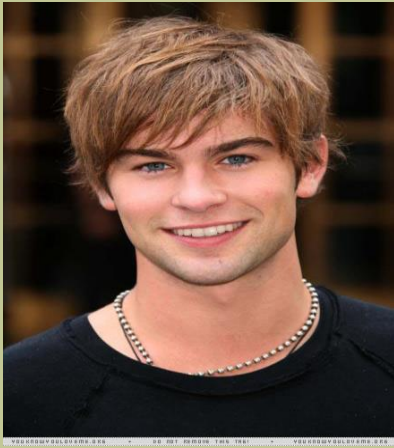


What can you make happen when you are **NOT** Sexy!

Katherine Region's story 2014-2017

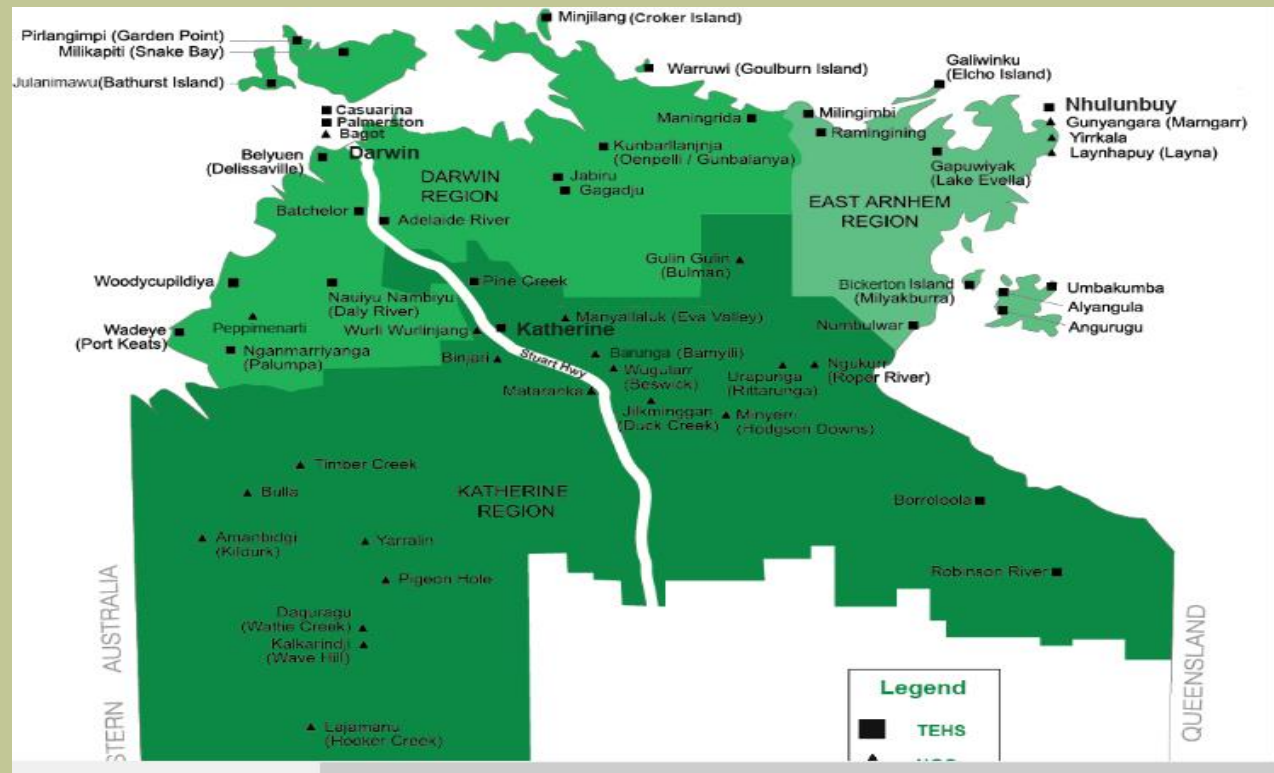
Monica Ostigh CQIF Katherine Region
CQI Collaborative Darwin 2017





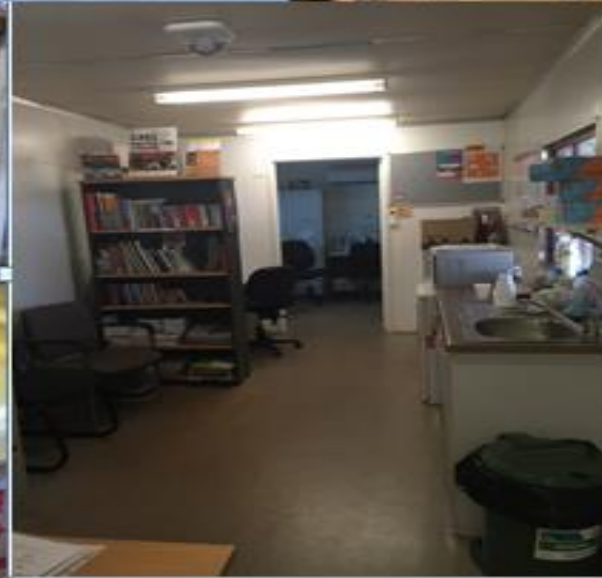
Definition: Not Sexy is when you can't have breakfast at Darwin Airport and be home on your verandah for a beer/wine by 7.30pm that night











Staffing

The good

A focused management team

Staffing stable in 3 out of 4 centres

The Bad

Cut to Programs such as SWW

The Ugly

Staff rotations

186 rotations = 150 orientations



Regionalisation



Because it isn't all about the staff..

Flow through for clients has improved.

KPI's have continue to improve.

There are no black spots on the Traffic Light Report.

The number of client complaints and ministerial requests have decreased.

BRL TRL

Adult Health Checks

		AHC Review	
Population 15 years and older :	696	72	● 10%
Population < 5 :	101	57	● 56%
Population 5 to 15 :	260	31	● 12%
Population 15 -55 :	599	56	● 9%
Population >55 :	97	16	● 16%

Adult Health Checks

		AHC Review	
Population 15 years and older :	626	298	● 48%
Population < 5 :	81	56	● 69%
Population 5 to 15 :	259	47	● 18%
Population 15 -55 :	533	246	● 46%
Population >55 :	93	52	● 56%

Adult Health Checks

		AHC Review	
Population 15 years and older :	645	311	● 48%
Population < 5 :	76	51	● 67%
Population 5 to 15 :	212	57	● 27%
Population 15 -55 :	548	254	● 46%
Population >55 :	97	57	● 59%

BRL TRL

2015

2016

2017

Program Targets

	Current	Program Goal
PCD Annual Review past year :	44.3%	80%
Cardiovascular Risk Assessment :	43.2%	80%
CVRA High <u>and</u> BP \leq 130 :	46.3%	80%
CVRA High <u>and</u> Total Chol \leq 4 :	43.4%	80%
Diabetic <u>and</u> HbA1c \leq 8% :	48.2%	80%
Diabetic <u>and</u> ACR < 30 :	60.0%	80%
NON Smoker :	46.8%	90%



NT AHKPI's

	Current
KPI 1.7 (Diab/IHD GPMP last 2 years)	61.4%
KPI 1.8* (Diabetics & HbA1c past year)	93.2%
KPI 1.9 (Diabetes, \uparrow ACR on ACEorARB)	83.8%
KPI 1.10 (AHC 15-55 years age)	9.3%
KPI 1.11 (AHC 55 years and older)	16.5%



Key Performance Indicators	Top End Health Service	Katherine	TE Central	TE East Arnhem South	TE W. Arnhem/ Maningrida	TE West
Population	1,723	146	188	242	627	520
KPI 1: Children on a Healthy Under 5 Care Plan	96%	99%	98%	92%	95%	98%
KPI 2: Healthy Under 5 Kids Coverage	71%	65%	89%	54%	69%	78%
KPI 3: Healthy Under 5 Kids Compliance	-	-	-	-	-	-
KPI 4: Children on an Immunisation Care Plan	95%	98%	99%	90%	93%	96%
KPI 5: Immunisation Timeliness	67%	71%	61%	57%	62%	80%
KPI 6: Haemoglobin Testing	76%	84%	86%	72%	72%	78%
KPI 7: Anaemia rates	16%	17%	14%	6%	22%	14%
KPI 8: Children on an Anaemia Care Plan	34%	28%	29%	30%	42%	27%
KPI 9: Timeliness of Anaemia Care Plan	-	-	-	-	-	-
KPI: 10 Growth Monitoring	71%	79%	82%	68%	65%	73%
KPI: 11 Children on a Growth Action Plans	12%	5%	15%	36%	8%	7%
KPI 12: Timeliness of Growth Action Care Plan	-	-	-	-	-	-

Key Performance Indicators	Top End Health Service	Katherine	TE Central	TE East Arnhem South	TE W. Arnhem/ Maningrida	TE West
Population	1,594	136	172	229	590	467
KPI 1: Children on a Healthy Under 5 Care Plan	98%	97%	99%	99%	99%	96%
KPI 2: Healthy Under 5 Kids Coverage	66%	55%	82%	61%	59%	72%
KPI 3: Healthy Under 5 Kids Compliance	-	-	-	-	-	-
KPI 4: Children on an Immunisation Care Plan	98%	99%	99%	97%	97%	100%
KPI 5: Immunisation Timeliness	83%	86%	85%	83%	78%	89%
KPI 6: Haemoglobin Testing	84%	93%	99%	83%	77%	86%
KPI 7: Anaemia rates	10%	7%	6%	6%	18%	6%
KPI 8: Children on an Anaemia Care Plan	64%	88%	78%	60%	56%	81%
KPI 9: Timeliness of Anaemia Care Plan	-	-	-	-	-	-
KPI: 10 Growth Monitoring	86%	86%	97%	87%	80%	88%
KPI: 11 Children on a Growth Action Plans	41%	43%	22%	62%	42%	34%
KPI 12: Timeliness of Growth Action Care Plan	-	-	-	-	-	-

Figure 1.10b Trend of resident Aboriginal clients 15 to 54 years who have a complete adult health check by sex and reporting period

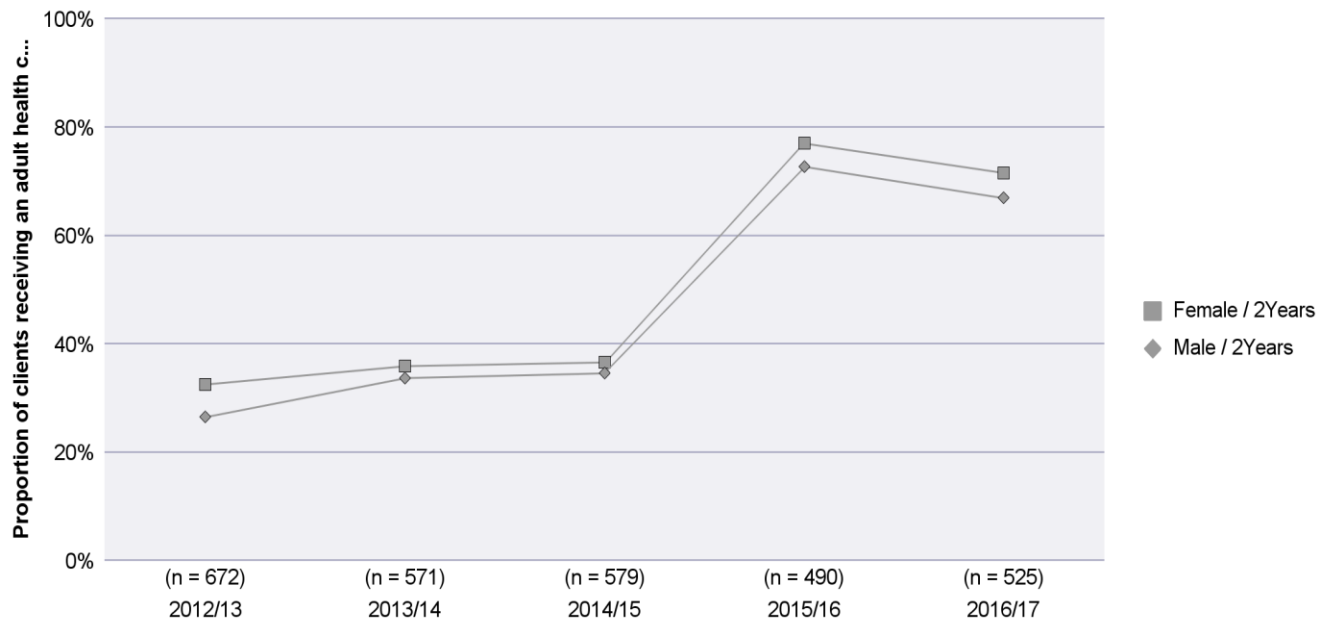


Figure 1.6b Trend of resident Aboriginal children 6 to 59 months of age measured for Anaemia and recorded as Anaemic by reporting year

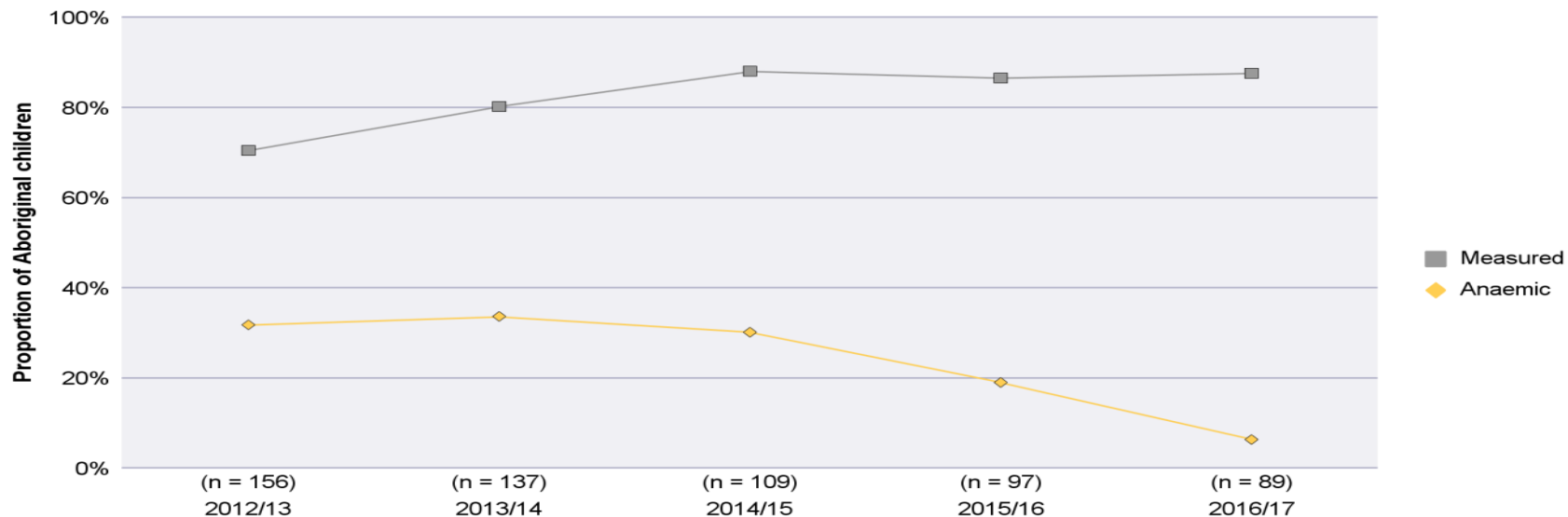
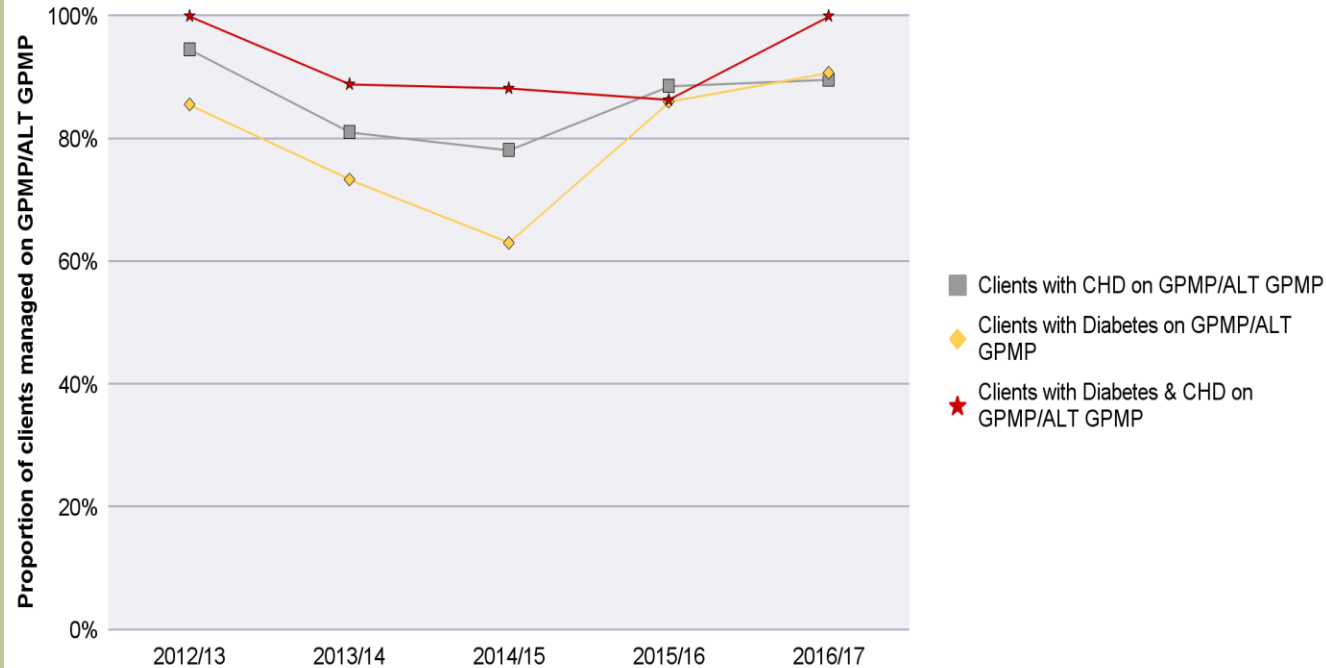


Figure 1.7b Trend of resident Aboriginal clients managed on chronic disease management plan by disease group by reporting period (24 months) by reporting year



What Have We Achieved



Growing the workforce





Improving the work space



Recognition

2016 Nomination: Administrator Awards – Team

2016 Nomination: Chronic Disease Network Awards – Individual

2017 Nomination: Nursing and Midwifery Awards – Individual



